

23 Conquest Close, Hitchin, SG4 9DP

This newly refurbished two bedroom home, located in Hitchin is available to purchase and would make an excellent choice for first time buyers or growing families.

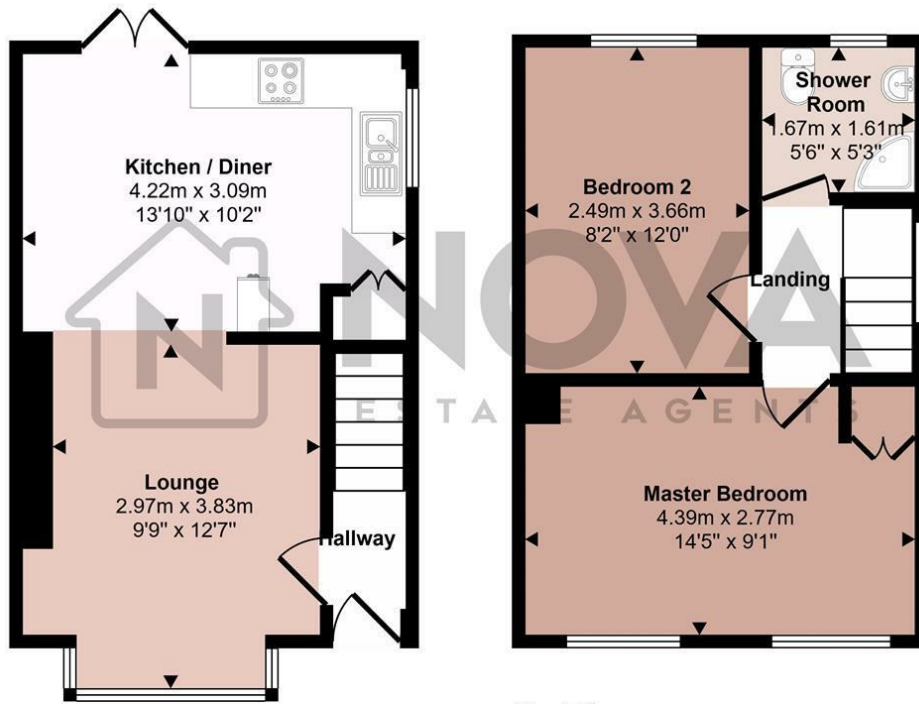
Inside, the property offers a bright and spacious open plan living area, where generous windows allow plenty of natural light to fill the room and French doors lead directly out to the rear garden. The layout creates an inviting space suitable for both relaxing and dining. The kitchen is also arranged in an open style and incorporates a designated dining area, making it practical for everyday use as well as entertaining.

The accommodation includes two good sized double bedrooms, providing flexible space for a couple, young family or guests. Externally, the property enjoys a private garden and the added advantage of parking to the rear. The house is in excellent decorative order and is available with no onward chain.

- Nova Estate Agents
- Press Play Button For 360° Walkaround Tour
- Newly Refurbished
- 2 Double Bedrooms
- Parking to Rear
- Modern Finishes Throughout
- Private Garden
- Close to Well Regarded Schools

£425,000

Approx Gross Internal Area
57 sq m / 616 sq ft



Ground Floor
Approx 29 sq m / 309 sq ft

First Floor
Approx 29 sq m / 307 sq ft

This floorplan is only for illustrative purposes and is not to scale. Measurements of rooms, doors, windows, and any items are approximate and no responsibility is taken for any error, omission or mis-statement. Icons of items such as bathroom suites are representations only and may not look like the real items. Made with Made Snappy 360.

